

## **I. An Introduction to the Product**

As the DVR product specially developed for the USB interface, the USB3104E product adopts the mainstream USB chip manufactured by CYPRESS. It has elegant black appearance and small volume, and it is easy to carry. The latest CONEXANT10-bit high definition ADC adopted at the front end features clear image effect and smooth data, and supports 1-channel real-time or 4-channel non-real-time video input. Due to the fact that it adopts the USB2.0 interface, supports D1 collection and has sound compatibility, it is suitable for monitoring small systems or using a notebook computer to conduct monitoring, and it is very convenient and practical. It adopts the currently popular H264 compression technology, which features clear image and the unique electronic amplification function and the disk pre-allocation system, enabling users to use it conveniently and quickly.

Video input: 1-4 AV interfaces

Video standard: PAL, NTSC

Total displaying resource: 30fps (NTSC) / 25fps (PAL)

Total resource of video recording: 30fps (NTSC) / 25fps (PAL)

Displaying resolution: 704×576

Video recording resolution: 704×570 / 352×288

Compression format: H.264

Compression bit rate: 64K-2Mbps selectable

Size: 98 mm × 60 mm × 20 mm

Weight: 50g

## **II. System Configuration Requirement**

CPU: Intel Celeron2.4G or faster;

Memory: 256MB or more;

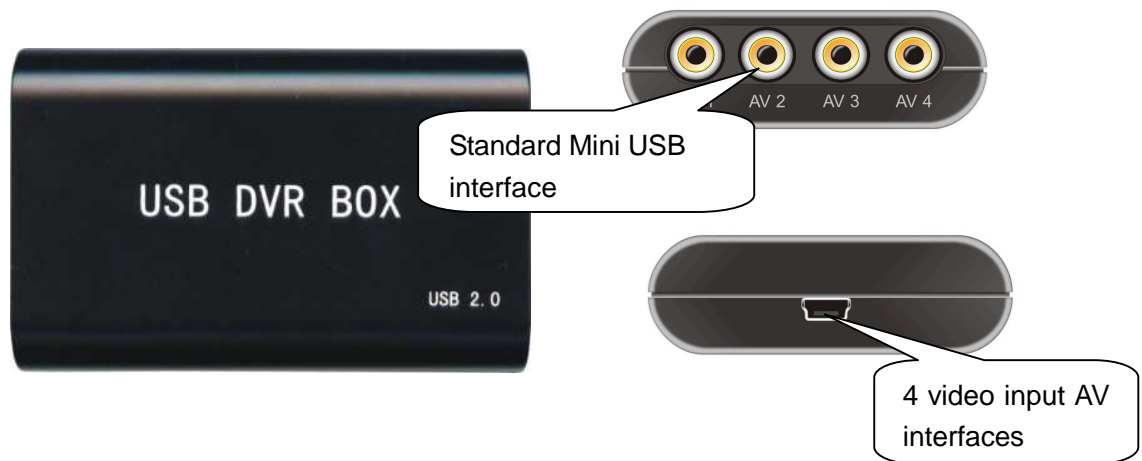
USB: Standard USB2.0 interface;

Hard disk: 40GB or above (add disk space according to the quantity of the channels and the video recording storage requirement);

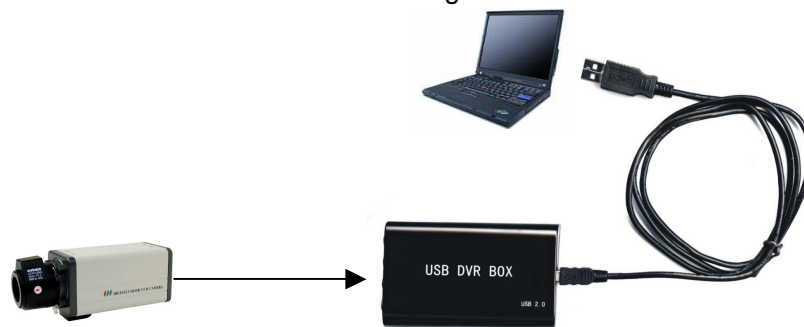
Operating system: Windows 2000; Windows XP; Windows Vista;

System setup: DirectX 9.0; 1024×768 resolution; 32-bit true color.

## **III. Hardware Installation**



Fix the USB collection cartridge first, and then connect it to the USB port of a desktop or notebook computer via a standard data cable. The video information from the camcorder is accessed to the collection cartridge via the AV interface.



#### IV. Software Installation

(Windows XP is taken as the example.)

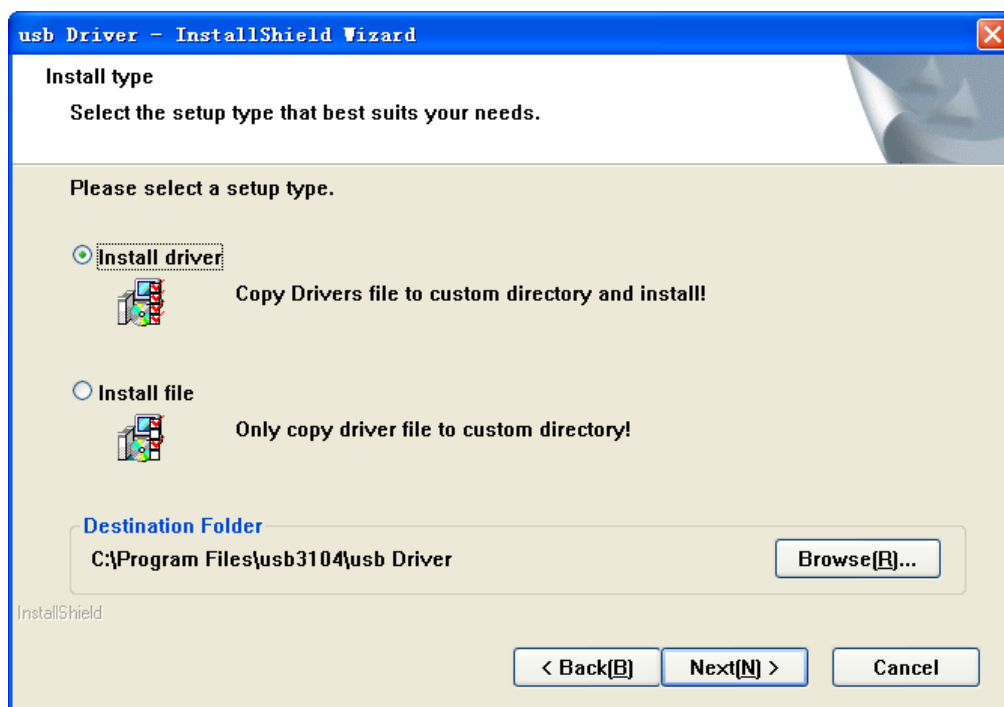
##### 1. Installing driver

Insert the software CD, which is shipped with the USB collection cartridge, into the CD drive to allow it to run automatically to display the installation interface (if it cannot automatically run, it is advisable to access the CD root directory to run Setup.exe).



Click “Driver” (ensure that the collection cartridge is connected to the USB port of the computer), and then click “Next” in the popup installation interface.

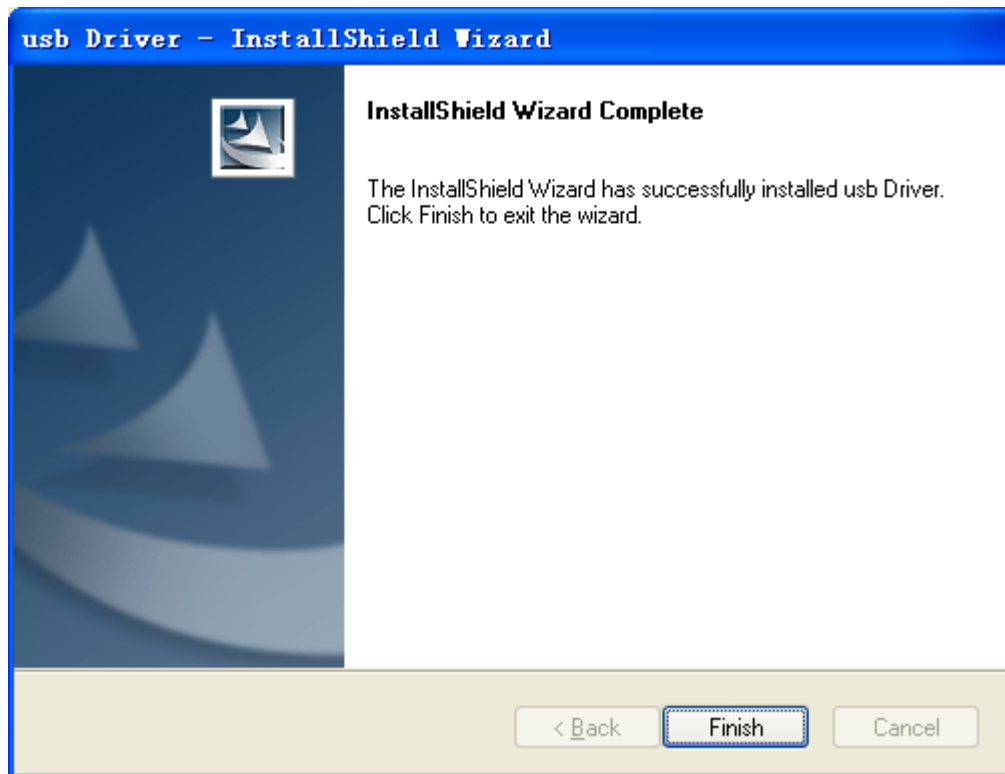
Follow the instructions to select the installation type and the installation path. If the USB confirms that it is connected to the computer, it is recommended to adopt the default “Install driver”. If you select “Install file”, you would have to manually install the driver when the installation is completed.



In installing the driver, if a dialog box prompts that the driver fails to pass the Windows test, click “Continue”.



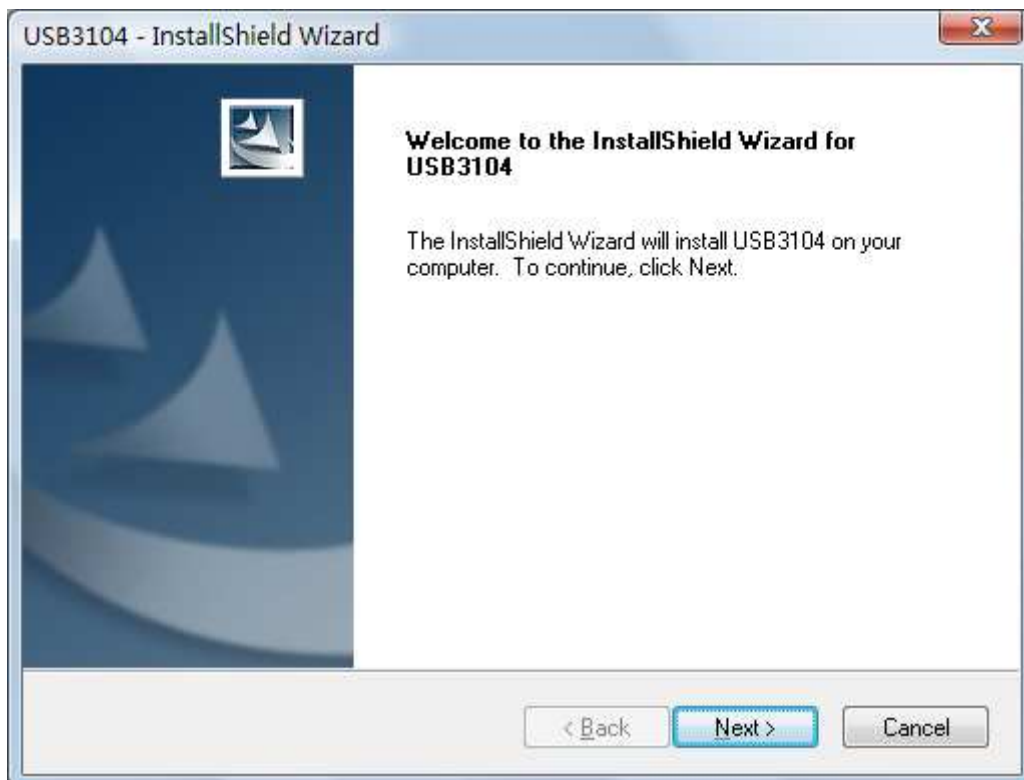
When the installation is completed, click "Finish".



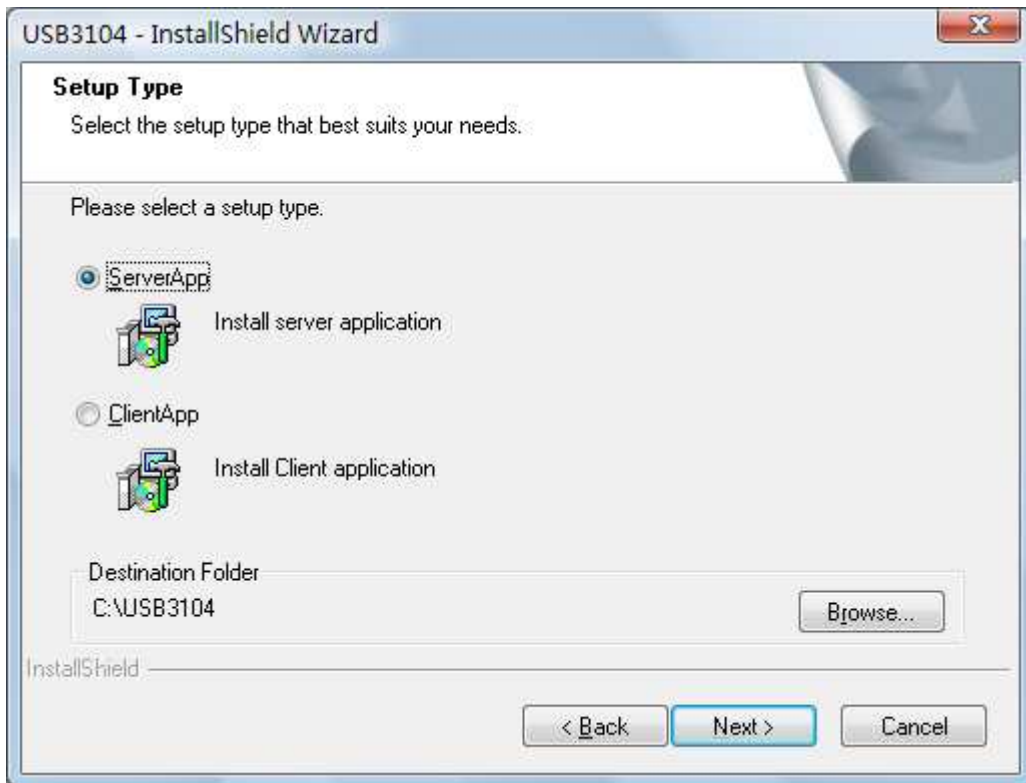
- ◆ When the driver installation is completed, it is necessary to restart the computer or hot plug/unplug the USB collection cartridge once.

## 2. Installing application program

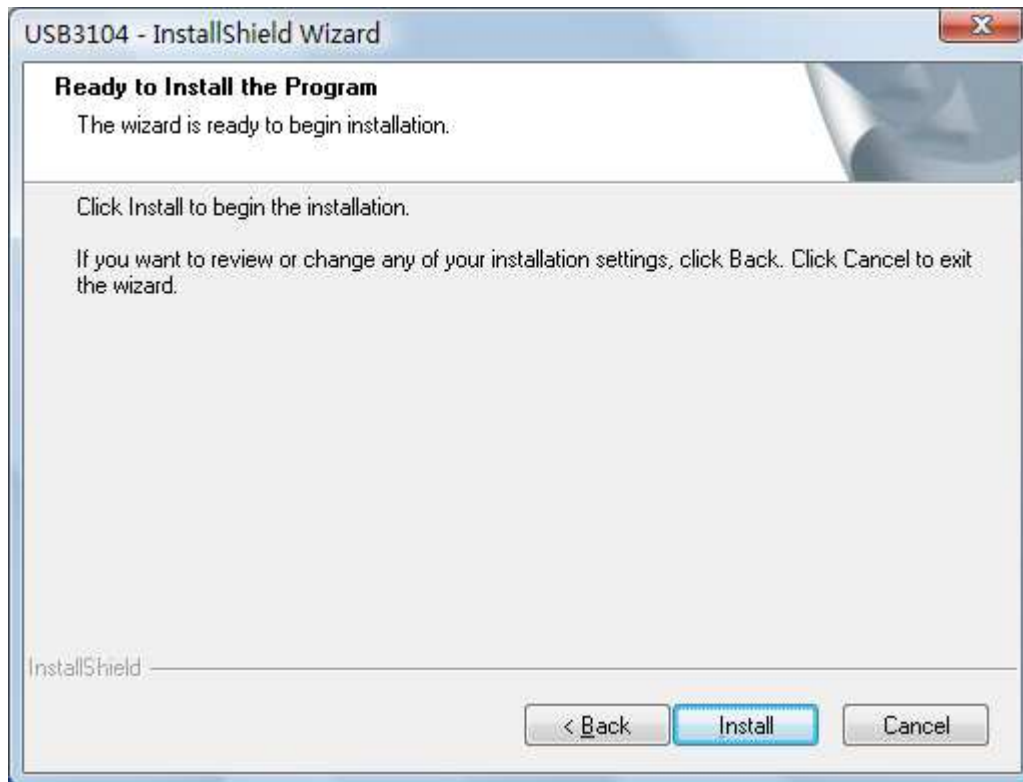
On the initial interface of the CD, click "Software" to display the application program installation interface, and then click "Next".



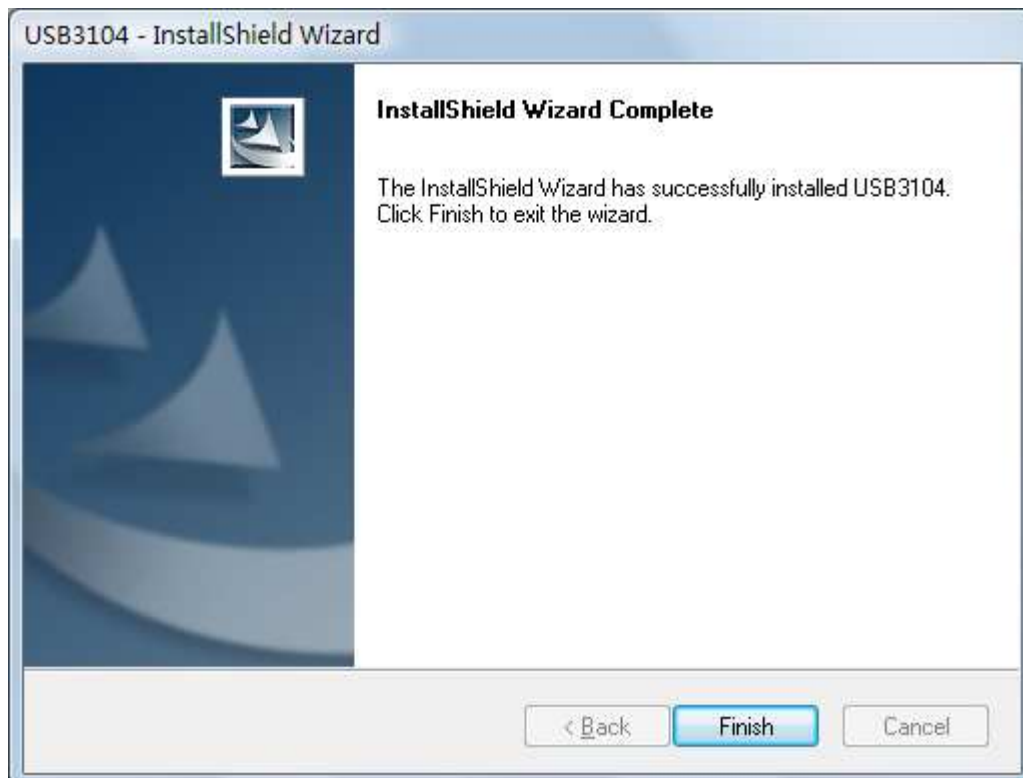
When the “Setup type” dialog box appears, click “ServerApp” (the computer on which the collection cartridge is installed)” or “ClientApp” (a remote computer that is to view the video) as needed. It is advisable to click “Browse” to specify an installation folder. By default, it is installed in the “\USB3104E” directory in the system disk. Click “Next”.



To confirm installation, click “Install” to start the installation, or “Back” to return to the change the installation settings.



After the installation is completed, click "Finish".



When the installation is completed, a shortcut "USB Server" will be generated on the computer desktop to execute the main program, double-click it to enter. Default



## 2. Picture Preview:



The main monitoring interface is divided into the video display zone and the control panel zone.

Within the video display zone, there is the multi-channel splitting display. You can amplify a certain channel by double-clicking the channel, and you can select the full-screen mode by clicking within the right key menu.

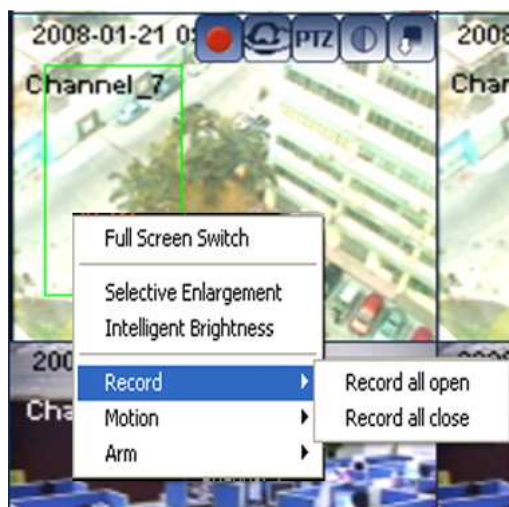
The control panel zone is the function zone for setting up or controlling the parameters of the software and image.

When being placed on the image of a certain channel, the mouse may activate the shortcut function button at the upper right corner of the image, and from left to right, they are "Video recording", "Sense", "PTZ control", "Video adjustment", and "Frame capture".



### 3. Manual Video Recording:

The manual video recording is the fastest in video recording after entering the software. It is advisable to directly click the shortcut video recording button of a certain channel to start this channel video recording (the color red indicates the status of being in video recording), or click the right key of the mouse within the image zone to select "Video recording"→ "Fully open video recording" to open the video recordings of all channels.



#### 4. Timed Video Recording:

The timed video recording refers to conducting video recording according to the period set up by the user, and it is planned, secure and stable.

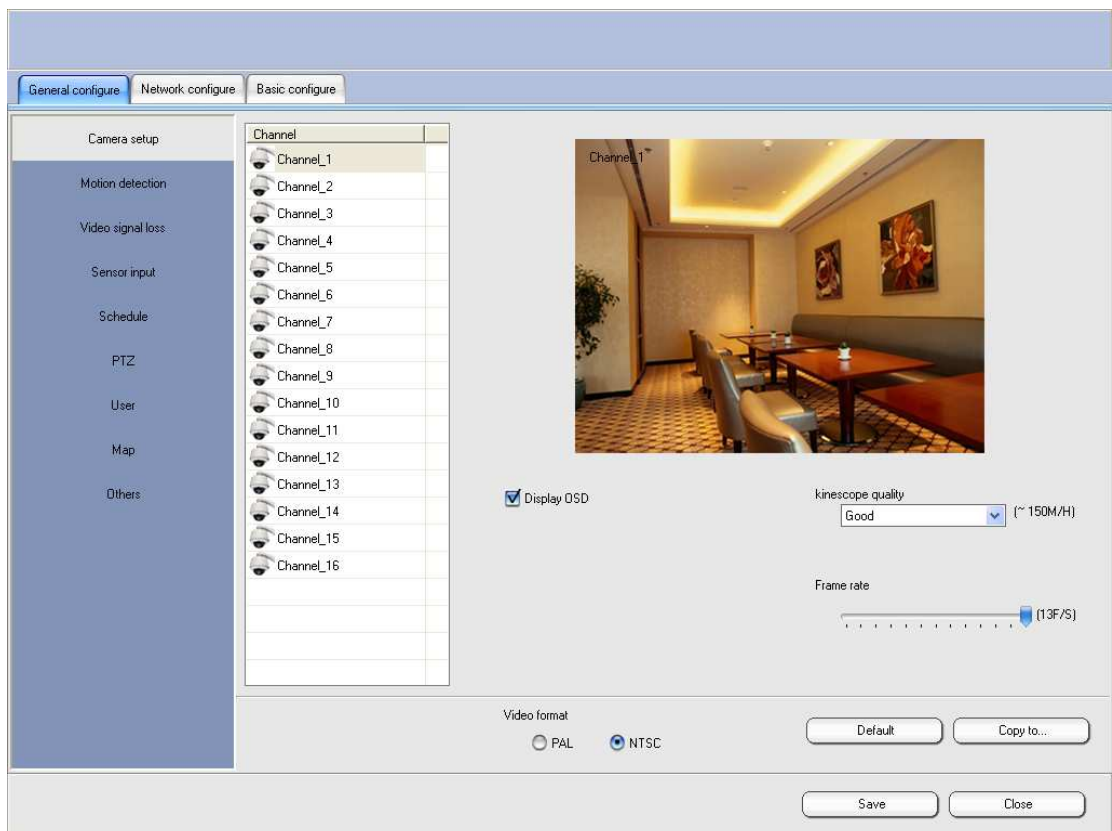
Click “Setup” on the right side of the main interface to enter the “Work Plan” option in the “Common setup”.

Firstly select the number of the corresponding channel in the video, and then click “Add” on the right, and add the video recording time period in the time period, with one week as a cycle. Different video recording time periods can be set for each day, and the default 0:00:00-23:59:59 is a whole day. If only the timed video recording is arranged, then it is necessary to select the “Motion sensing” plan as NO.

On the upper right, click “Copy this day to...”, and you can copy the set video recording time period of a certain day as the same for one week.

On the lower right, click “Copy to ...”, and you can copy the set time period of a certain channel to other channels.

When the setup is completed, saved and closed, the software starts recording video according to the work plan.

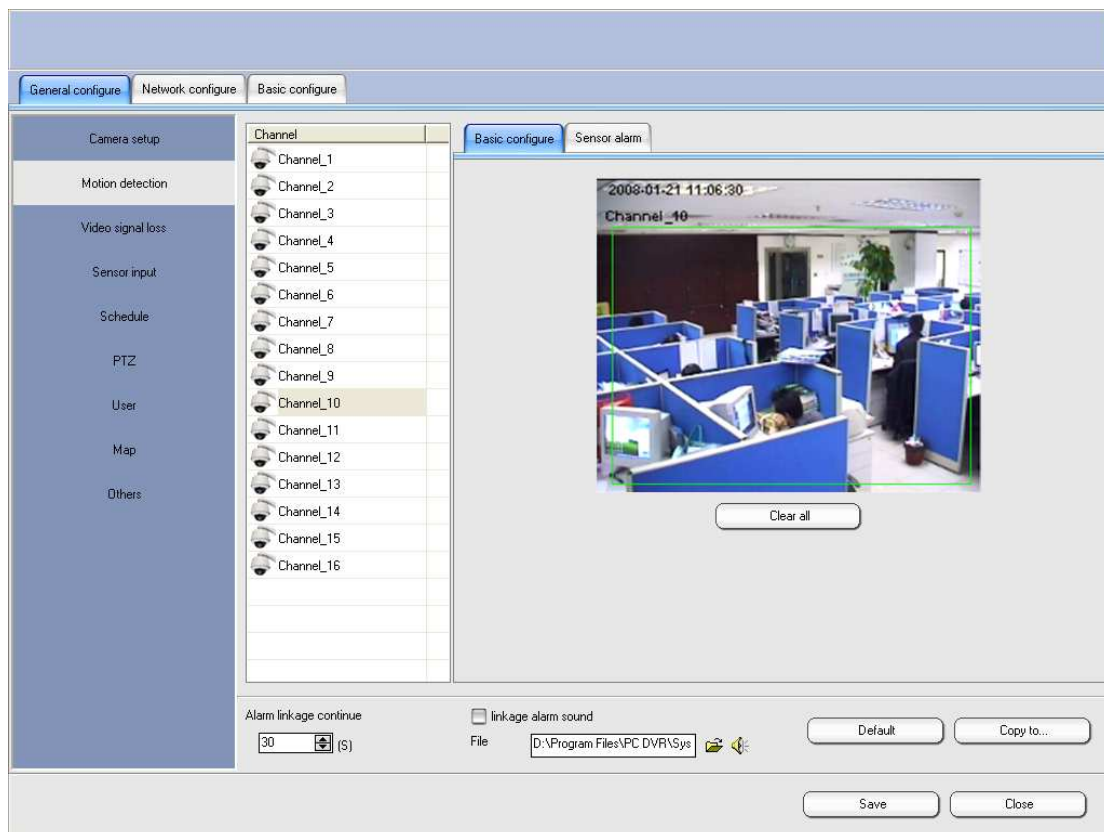


#### 5. Motion Sensing Video Recording:

The motion sensing function is to detect whether the video has any action which will trigger some software functions, including video recording, warning and audio.

Click “Setup” in the main interface to enter the “Motion sensing” option in the

“Common setup” and select the corresponding channel. In the image box of the “basic setup”, press the left key of the mouse and draw rectangle sensing zones of any sizes to which many zones can be added. Only when an object moves in the set zone, will the video recording or warning (if no zone is set, full-screen sensing is conducted by default) be triggered. It is advisable to click “Copy to...” on the lower right to copy the zone setup of the current channel to other channels.



“Trigger cooperation” is an optional action of the cooperation-related software when the motion sensing is triggered. By default, the software records each channel. You can edit other trigger functions, such as warning output, and network upload.

“Cooperation continuation”: The delay time of the cooperation task after sensing is triggered.

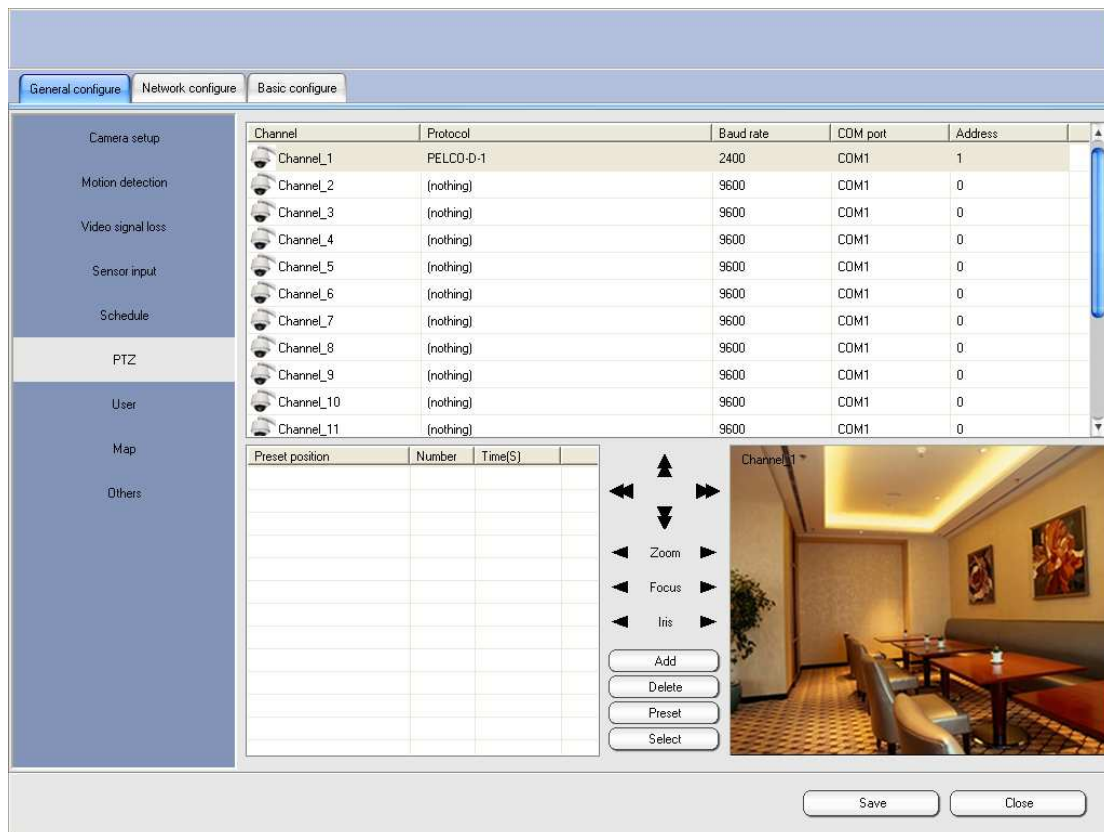
“Cooperation audio”: After it is triggered, you can select the mode that the wav audio file play is output by the audio card.



decoder manual.

“Serial port”: The COM port of the computer to which the code converter is connected.

“Address”: Address code of the decoder.



When the setup is completed, click “Save”, and you can conduct the test in control zone on the lower right. You can also return to the main interface and click “PTZ” in the shortcut function button on the upper right of the setup channel to control the corresponding decoder.



- ◆ The holder direction control adopts the mouse pointer mode. The mere moving of the mouse to different directions in the channel to be controlled can trigger the control pointer to conduct click operations.

## 7. Video Recording Review

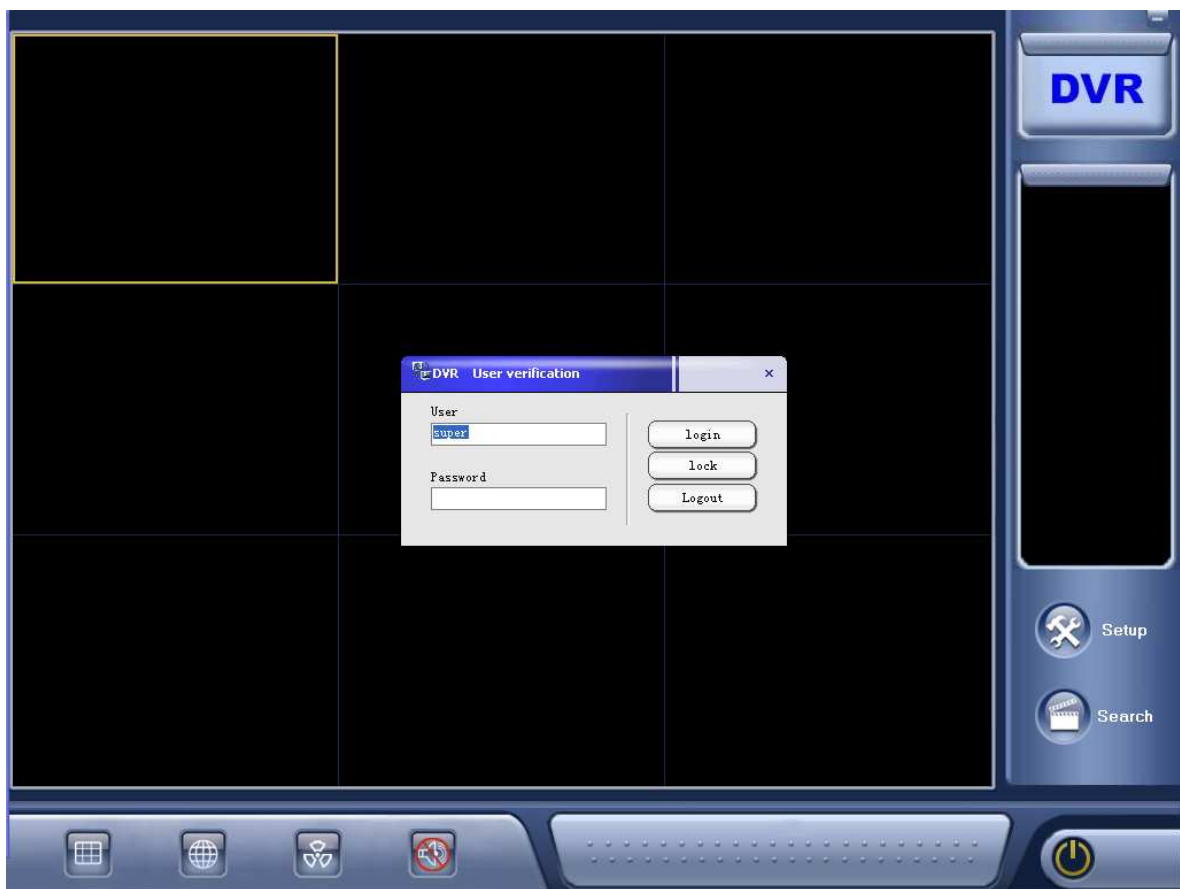
Click "Retrieve" → "Video recording review" on the right side of the main interface to enter the review interface. From the date table on the upper right, the corresponding date can be selected, and the color date indicates that there is video recording file that day. The video recording data is expressed with data bars in the table under the interface. Green indicates regular video recording, red indicates warning video recording, and the horizontal line 1: 00-23: 00 over the data table indicates 24 hours.

Select the video recording channel to be reviewed on the left side of the data table (channels 1-4 by default); the mouse arbitrarily clicks the red vertical lines in the time period with data, namely, the start time for the video recording to be played. Click "Play" on the right to start playing the selected time period and the video recording file of the channel.

 A screenshot of a video recording review interface. The main area is divided into four quadrants, each showing a different camera view: top-left shows a control room (CAM 1), top-right shows a reception desk (CAM 2), bottom-left shows a desk with a computer (CAM 3), and bottom-right shows an outdoor street scene (CAM 4). Each view has a timestamp: "2008-1-19 09:31:42 CAM 1", "2008-1-19 09:31:42 CAM 2", "2008-1-19 09:31:42 CAM 3", and "2008-1-19 09:31:42 CAM 4".
   
 On the right side, there is a date selection calendar for January 2008. The 5th is highlighted in yellow. Below the calendar is a "Select date: 2008-07-05" field with a dropdown for the year (2008) and a dropdown for the day (7). There are also grid selection icons.
   
 Below the date selection, there are two recording status indicators: "Common Recording" (green) and "Alarm Recording" (red). Below these are two buttons: "Selective Enlargement" and "Capture frame browser".
   
 At the bottom right, there are three sliders for "Saturation(0)", "Contrast(0)", and "Brightness(0)". Below the sliders is a "speed" slider with a dropdown menu showing options: 1/8, 1/4, 1/2, 1, 2, 4, 8.
   
 At the bottom left, there is a timeline with a grid. The top row shows hours (H), minutes (M), and seconds (S) from 0 to 23. Below the grid, there is a list of channels: Channel\_1, Channel\_2, Channel\_3, Channel\_4, Channel\_5, Channel\_6, Channel\_7. A red vertical line is positioned at the 11:00 mark on the timeline.
   
 At the bottom right, there are several playback control icons: play, stop, next, previous, and a power button.

8. Client Connection:

When running normally, the host can install the client program in any computer in the network that is connected to the host, and to conduct remote image browse, review and control. In stalling the program, select "Client" installation, and when it is completed and closed, execute "USB client" start client program in the desktop client shortcut mode.









After returning to the main interface, you find that the group and channel information appear in the information column on the right, and you can right click the group name to monitor all the images or double-click a single channel to monitor the image.

- ✧ **This manual only briefly introduces the above basic functions. If you need more detailed software operation description, please refer to the detailed operation manual for the software or help file.**

## VI. Frequently Asked Questions

- ◆ **When the monitoring software is operated, the system operation is slow or image frame loss and software misreport occur.**

View the occupancy of the CPU and memory. If it is in the saturation status, maybe the CPU frequency is too low or problems occur to other computer computers. It is recommended to use the Celeron D 2.66G or faster CPU and high-quality memory and video card.

- ◆ **When the software runs, there is no image or abnormal image in the display box.**

Firstly determine whether the computer USB interface is the 2.0 standard. If yes, then the 1.1 interface cannot be used normally. Check whether the video information source is normal. It is required to install DirectX8.0 above, and the display should be set as resolution 1024\*768, and the color should be 32-bit real color.

- ◆ **In the first running of the software, it is impossible to create the database.**

It must be ensured that the hard disk has at least two partitions, and the system disk file system must also be in the NTFS format and the remaining capacity must be at least over 1G.

- ◆ **The storage, backup and play of the video recording file**

The database takes the pre-allocated space mode, and the space of he selected partition is all occupied after the creation of the database, and it is impossible to view its file in the windows. If it is necessary to back up the video recording data, it is advisable to dump it in the review interface to other disk partitions. The dedicated player of the video recording file is in the Player folder under the installation directory.

- ◆ **The client and IE cannot browse the host image.**

Firstly make sure that the connection between the computer on the network and the host is normal. Check whether other application software occupies the 80 port at the host end. It is advisable to modify the network port in "Setup" → "Network setup" → "Communications parameter". When the IE accesses the network, it is necessary to minimize the IE security level of the computer so that the control can be downloaded normally. When Windows XP operating system cannot lower the security level, it is advisable to enter the IE security user-defined level to change all disabled items into prompt or enabled items.