

# Instruction Manual

## Solar Hausnummer Lamp Vision



These instructions relate **ONLY** to this product and contain important information for using the product for the first time. Please keep these instructions for later reference and should always accompany the product in the event of transference to a new user.

### 1. Introduction

Dear Customer, thank you for purchasing the solar light. With this solar light you purchased a product manufactured according to the current state of technology.

**This product fulfils all requirements of the valid European and national regulations. The conformity was proved. The relevant declarations and documentation are deposited with the manufacturer.**

To maintain this state and guarantee a safe operation, you as the user will have to follow this operating manual!

### 2. Safety Instructions



- In case of damages caused by not following this operating manual, the warranty rights will expire! We exclude liability for any consequential damages!

- We exclude liability for property or personal damages caused by inappropriate handling or not following the safety instructions.
- In these cases any guarantee rights will expire.

Due to safety and admission reasons (CE) it is not allowed to arbitrarily reconstruct and/or change the solar light.

Therefore, please keep to the operating manual.

The accident prevention rules of the association of the industrial trade cooperative association for electric plants and working material are to be considered in industrial environments.

### 3. Intended Application

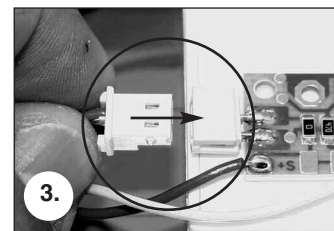
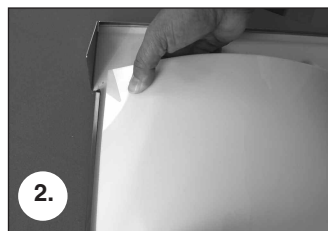
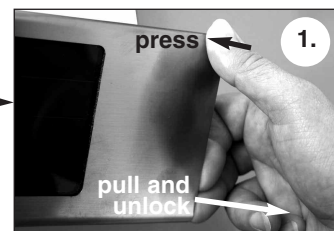
The light is automatically activated with the onset of darkness and turns off with the arrival of natural morning light. The maximum illumination of the lighting is app. 100 hours without boost charges, should the battery be completely charged. The innovative ASI solar module located in the upper part of the encasement automatically reloads its battery, even under cloudy skies.

**Note:** In the winter or should house numbers be mounted facing north, it is unfortunately possible that there is not a sufficient enough amount of daylight to provide lighting during the evening. In this case, search for a more favorable position for your house number. A mounting facing south would be optimal. A mounting facing east or west is also possible. A mounting on the northern side of the house is not beneficial for this lamp!

### 4. Startup Procedure

1. Carefully remove the parts from the packaging.
2. Place the housenumber light on a table and snap off the upper cover with the solar module from the lower portion. Do this by pressing your thumb on the lower portion while placing pressure with you fingers on the other side, then unlock the device (Illustration 1). Carefully pull up/off the upper cover.
3. Uncase the lamp surface from the holder (Illustration 2) and remove the protective covering. Now affix your house number to the surface of the lamp using the provided sticker numerals. You can also have the surface of the lamp printed with a silk-screen procedure at your local printing shop.
4. Stick the battery cable plug carefully into the socket on the printed circuit board (Illustration 3).
5. Now reinsert the numbered lamp surface in the holder.
6. Mount the lower portion of the lamp to a sunny side of the house using the provided attachment hardware.
7. After a successful assembly of the lamp, simply remount the upper portion of the lamp surface and snap it back onto the lower portion.

**The solar lamp is now activated.**

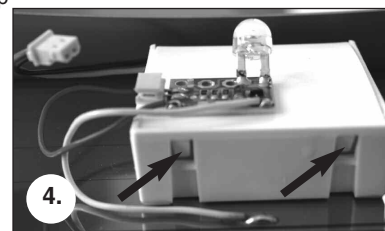


**Note:** During the winter, there is generally a much shorter period of daylight. If the lamp does not provide any light on the first evening of use, please allow it another day of sunlight.

### 5. Replacing the Battery

After several years of use, the capacity of the battery pack depreciates and it must be replaced. The battery pack can be purchased commercial-ly or directly through the manufacturer.

1. Open the housenumber lamp as described above.
2. Pull out the battery (Illustration 4), press in the nose of the battery compartment and then open it. Remove the used battery pack from the compartment.
3. Insert the new battery pack and then close the battery compartment again.
4. Stick the plug of the battery pack in the socket on the printed circuit board. Close the encasement again by conducting the steps backwards.



### 6. Malfunctions

**The lamp does not turn on when it gets dark outside.**

- An outside light source (for example, a street light) simulates daylight for the solar module and prevents the lamp from turning on. Place the lamp in a darker area.

**The lamp does not turn on in the dark or only turns on shortly.**

- Battery installed?
- Battery is weak or defective? Replace the battery.

### 7. Technical Data

Supply voltage:	3.6 V
Included batteries:	Nickel-Metal-Hydride 3.6 V/1300 mAh
Illuminant:	1 white super-light light-emitting-diode
Solar module:	ASI solar cell, German manufactured
Period of illumination:	Max. 100 hours with full battery set

#### Battery take-back

- Batteries must not be discarded into domestic waste.
- The consumer is legally required to return batteries after use, e.g. to public collecting centers or to battery distributors.
- Contaminant-containing batteries are labeled with the sign "crossed-out trashcan" and one of the chemical symbols Cd (= battery contains cadmium), Hg (= battery contains mercury), Pb (= battery contains lead). Used batteries should be disposed environmentally friendly and should not be discarded into domestic waste. Your dealer is legally required to take back old batteries.



**NiMh**

#### Importeur:

esotec GmbH, Etzenrichterstr. 14, D-92729 Weiherhammer  
Tel.-Nr: 0049 (0)9605-92206-28, Fax.-Nr: 0049 (0)9605-92206-10,  
e-mail: info@esotec.de

Internet: www.sunnytrend.de

**Hersteller Art.-Nr: 102200**

Copyright